



Washer extractor

W575N

Features and benefits

- **Compass Pro[®] microprocessor offers:**
 - Large display and one control knob for easy program selection
 - Language selection
 - Quick selection and option buttons for the most frequently used wash programs and options
 - Wash program packages optimized on Economy, Performance and Time. (Available on general programs)
- Extremely low water and energy consumption – see table below
- Four compartment detergent box for manual dosing of powder or liquid detergent
- High extraction force for efficient dewatering
- Door with gasket and strong hinges built for heavy duty operation
- Stainless and galvanized steel in all vital parts for high degree of rust protection
- SuperBalance guarantees the correct extraction force

Main options

- Automatic liquid detergent supply (optional I/O board)
- Stainless steel front panel
- Connection to booking- /payment- system or coin meter
- Drain pump

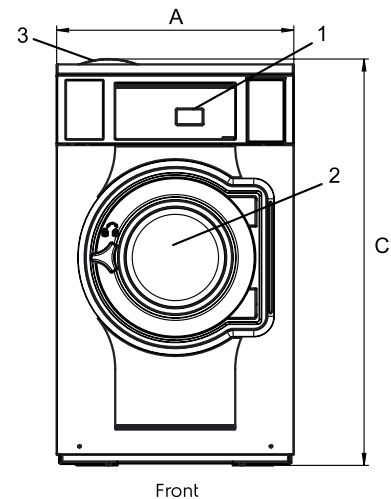


Images shown are a representation of the product only and variations may occur.

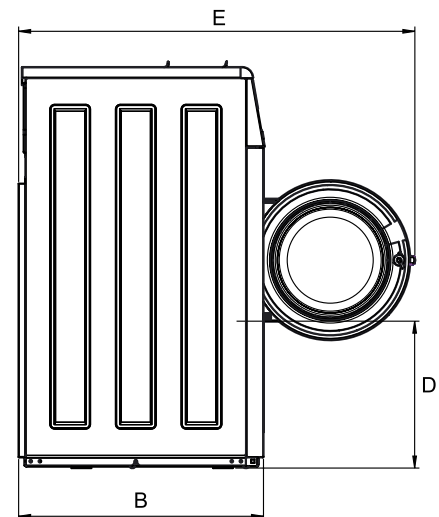
Main specifications				W575N			
Max. capacity	filling factor 1:9	kg/lb		8/18			
Drum,	volume	litre		75			
	diameter	ø mm		520			
Extraction		rpm		587			
G-factor				100			
Standard heating alternatives	electricity	kW		5.4 / 7.5			
Low energy heating alternatives	electricity	kW		2.0 / 3.0			
	steam			X			
	non-heated			X			
Consumption data "Normal 60°C"							
Economy				EI		Steam	
Total time	min			Full load, 8 kg	Half load, 4 kg	Full load, 8 kg	Half load, 4 kg
Water consumption (cold+hot)	litre			44	42	44	42
Energy consumption (motor/heating/hot water)	kWh			47+13	37+8	60+0	45+0
Steam consumption	kg			0.1/0.35/0.8	0.1/0.25/0.45	0.1/-	0.1/-
Residual moisture	%			-	-	1.75	1.05
				69	78	69	78

Water temperature 15°C cold water and 65°C hot water.
Depending on steam pressure.

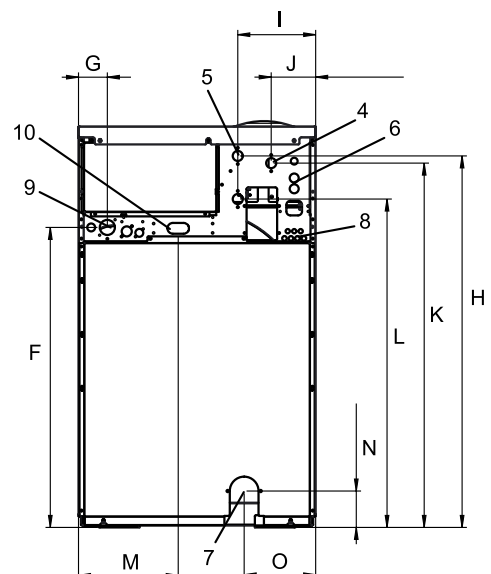
Electrical connections					
Heating alternative	Main voltage		Heating power kW	Total power kW	Recommended fuse A
		Hz			
Electric heated	220-240V 1 ~	50/60	5.4/7.5	5.7/7.8	25/35
	220-240V 1 ~	50/60	2.0/3.0	2.3/3.3	16
	220-240V 3 ~	50/60	5.4/7.5	5.7/7.8	16/25
	380-415V 3N ~	50/60	5.4/7.5	5.7/7.8	10/16
	440V 3 ~	60	7.5	7.8	16
	480V 3 ~	60	7.5	7.8	16
Steam or Non heated	220-480V 1 ~		-	0.4	10



Front



Side view



Rear

Water and steam connection			W575N
Water valves	DN		20
Water pressure	kPa		200-600
Capacity at 300 kPa	l/min		20
Drain valve	ø mm		75
Draining capacity	l/min		170
Steam valve	DN		15
Steam pressure	kPa		300-600
Liquid detergent supplies			5
Floor requirements			
Frequency of the dynamic force	Hz		9.8
Floor load at max extraction	kN		1.6 ± 1.9
Sound levels			
Sound power level (IEC 60704-2-4) wash	dB(A)		65
extraction	dB(A)		69
Heat emission			
% of installed power, max			5
Shipping data			
Weight	net, kg		116
Shipping volume	m ³		0.75
Accessories			
Steel base			x
Hose kits for water or steam			x
Fluff collector			x
Dimensions in mm			
A Width			660
B Depth			681
C Height			1131
D			409
E			1099
F			835
G			80
H			1034
I			217
J			124
K			1014
L			914
M			278
N			101
O			199
1 Operating panel	7 Drain		
2 Door opening ø 310 mm	8 Liquid detergent supply		
3 Detergent box	9 Electrical connection		
4 Cold water	10 Steam connection		
5 Hot water			
6 Re-used water			

Front and side panels in light grey and blue (RAL 260 70 05, 250 60 30)

Other voltages available, see installation manual

Average data. Crated weight/shipping volume depends on configuration.

Please contact logistics for exact measures.



Electrolux
Authorized
Partner



Art No. 438919508EN/2015.07.08

We reserve the right to alter specifications without notice.

Unit 3 / 41 Biscayne Way, Jandakot, WA 6164
Ph : (08) 9414 9474 Fax : (08) 6210 5961
Service : 0411 883 346 / 0400 246 352
Sales : 0406 659 429 / sales@comls.com.au
Web site : www.comls.com.au