



Washer extractor

W555H Marine

Features and benefits

- **Compass Pro® microprocessor offers:**
 - Large display and one control knob for easy program selection
 - Language selection
 - Quick selection and option buttons for the most frequently used wash programs and options
 - Wash program packages optimized on Economy, Performance and Time. (Available on general programs)
- **AS – Automatic Savings:**
 - The machine weighs the linen and adjusts the amount of water and energy according to the load. This leads to considerable savings in case the machine is not fully loaded. (Available on general programs)
- Extremely low water and energy consumption – see table below
- Four compartment detergent box for manual dosing of powder or liquid detergent
- High extraction force for efficient dewatering
- Door with gasket and strong hinges built for heavy duty operation
- Stainless and galvanized steel in all vital parts for high degree of rust protection
- **Power Balance:**
 - Maximises the extraction force, leading to highest dewatering and savings in drying
 - Minimizes the stress on the machine, leading to trouble-free operation and increased machine lifetime
 - Reduces vibrations, making it possible to install the machine in all locations



Images shown are a representation of the product only and variations may occur.

Main options

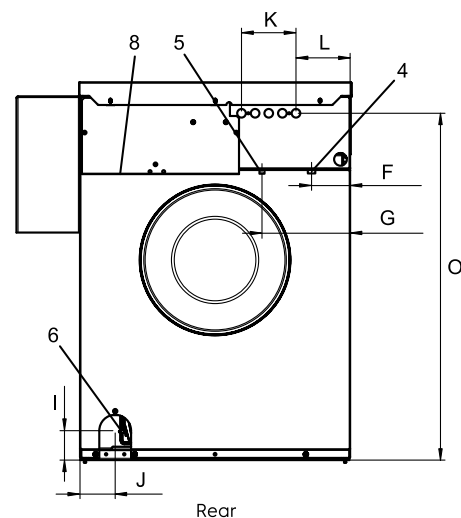
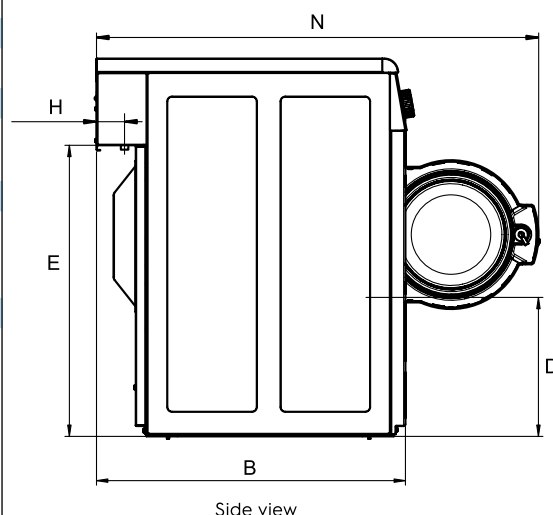
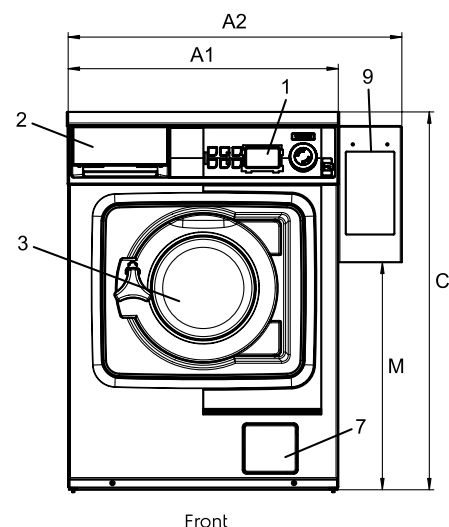
- Automatic liquid detergent supply (optional I/O board)
- Connection to booking- /payment- system or coin meter
- Drain pump
- Stacking kit to install tumble dryer T5130 on top to save space

Main specifications				W555H	
Max. capacity filling factor 1:9	kg/lb			6/13	
Drum, volume	litre			53	
diameter	ø mm			452	
Extraction	rpm			1300	
G-factor				425	
Heating alternatives, 230/400V	electricity	kW		2.2 / 2.8 / 4.4	
	non-heated			x	
Consumption data "Normal 60°C"					
Economy				Full load, 6 kg	Half load, 3 kg
Total time	min			49	46
Water consumption (cold+hot)	litre			38+10	18+5
Energy consumption (motor/heating/hot water)	kWh			0.2/0.2/0.6	0.2/0.1/0.3
Residual moisture	%			46	48
Water temperature 15°C cold water and 65°C hot water. Programs with AS.					

Electrical connections					
Heating alternative	Main voltage	Hz	Heating power kW	Total power kW	Recommended fuse A
Electric heated	220-230V 1~	50/60	2.1	2.5	16
	220-230V 1~	50/60	4.2	4.7	25
	240V 1~	50/60	2.2	2.6	16
	240V 1~	50/60	4.4	4.8	20
	220-230V 3~	50/60	4.2	4.7	20
	240V 3~	50/60	4.4	4.8	20
	380-400V 3~	50/60	3.2	3.6	10
	415V 3~	50/60	3.6	4.0	10
	440V 3~	60	4.0	4.5	16
	480V 3~	50/60	4.4	4.8	10
	380-400V 3N~	50/60	4.2	4.7	10
	415V 3N~	50/60	4.4	4.8	10
Non heated	220-240V 1~	50/60	-	0.9	10

Water connections		W555H
Water valves	DN	20
Water pressure	kPa	200-500
Capacity at 300 kPa	l/min	17
Drain valve	ø mm	50
Draining capacity	l/min	160
Liquid detergent supplies		5
Floor requirements		
Frequency of the dynamic force	Hz	24.2
Floor load at max extraction	kN	1.02 ± 0.3
Sound levels		
Sound power level (IEC 60704-2-4)		
wash	dB(A)	59
extraction	dB(A)	72
Heat emission		
% of installed power, max		5
Shipping data		
Shipping volume	net, kg crated, m ³	100 0.46
Accessories		
Stainless steel fluff collector		x
Stacking kit with tumble dryer		x
Steel base		x
Dimensions in mm		
A1 Width		595
A2 Width		735
B Depth		681
C Height		832
D		306
E		641
F		84
G		194
H		48
I		65
J		78
K		120
L		119
M		501
N		974
O		764
1 Operating panel	5 Hot water	
2 Detergent box	6 Drain, valve	
3 Door opening ø 255 mm	7 Drain, pump	
4 Cold water	8 Electrical connection	
	9 Payment system	

Front and side panels in light grey and blue (RAL 260 70 05, 250 60 30)
 Other voltages available, see installation manual.
 Average data. Crated weight/shipping volume depends on configuration.
 Please contact logistics for exact measures.
 Art. No. 438913941EN/2015.03.25
 We reserve the right to alter specifications without notice.



Electrolux
Authorized
Partner



Unit 3 / 41 Biscayne Way, Jandakot, WA 6164
 Ph : (08) 9414 9474 Fax : (08) 6210 5961
 Service : 0411 883 346 / 0400 246 352
 Sales : 0406 659 429/ sales@comls.com.au
 Web site : www.comls.com.au