



# Washer extractor

## W5105N

### Features and benefits

- **Compass Pro® microprocessor offers:**
  - Large display and one control knob for easy program selection
  - Language selection
  - Quick selection and option buttons for the most frequently used wash programs and options
  - Wash program packages optimized on Economy, Performance and Time. (Available on general programs)
- Extremely low water and energy consumption - see table below
- Four compartment detergent box for manual dosing of powder or liquid detergent
- High extraction force for efficient dewatering
- Door with gasket and strong hinges built for heavy duty operation
- Stainless and galvanized steel in all vital parts for high degree of rust protection
- SuperBalance guarantees the correct extraction force

### Main options

- Automatic liquid detergent supply (optional I/O board)
- Stainless steel front panel
- Connection to booking- /payment- system or coin meter
- Drain pump

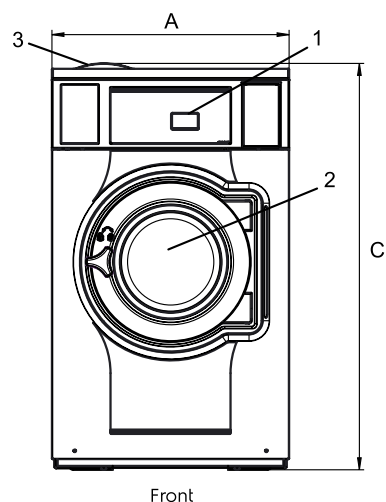


Images shown are a representation of the product only and variations may occur.

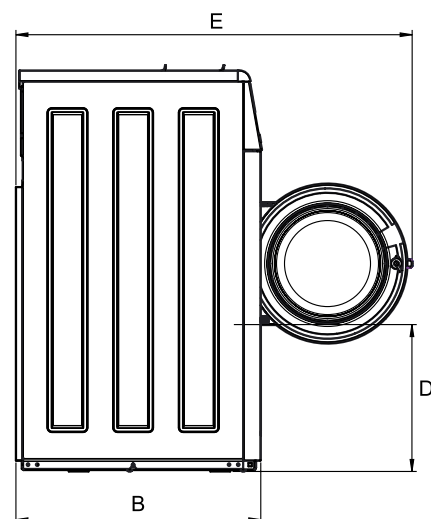
Main specifications				W5105N			
Max. capacity filling factor 1:9	kg/lb			11/25			
Drum, volume	litre			105			
diameter	ø mm			595			
Extraction	rpm			548			
G-factor				100			
Standard heating alternatives	electricity	kW		7.5 / 10.0			
Low energy heating alternatives	electricity	kW		3.0			
	steam			x			
	non-heated			x			
<b>Consumption data "Normal 60°C"</b>							
<b>Economy</b>							
Total time	min			Full load, 11 kg	Half load, 5.5 kg	Full load, 11 kg	Half load, 5.5 kg
Water consumption (cold+hot)	litre			45	43	45	43
Energy consumption (motor/heating/hot water)	kWh			61+19	49+13	80+0	62+0
Steam consumption	kg			0.15/0.55/1.2	0.1/0.4/0.8	0.15/-	0.1/-
Residual moisture	%			-	-	2.6	1.8
				69	78	69	78

Water temperature 15°C cold water and 65°C hot water.  
Depending on steam pressure.

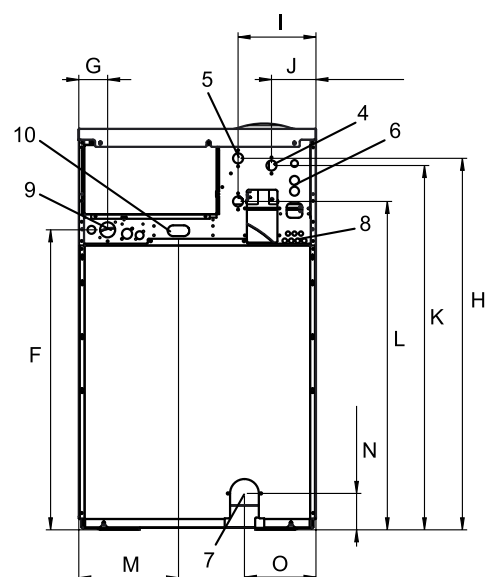
Electrical connections					
Heating alternative	Main voltage	Hz	Heating power kW	Total power kW	Recommended fuse A
Electric heated	220-240V 1 ~	50/60	3.0/7.5/10.0	3.3/7.8/10.3	20/35/50
	220-240V 3 ~	50/60	7.5/10.0	7.8/10.3	25/35
	380-415V 3N ~	50/60	7.5/10.0	7.8/10.3	16/20
	440V 3 ~	60	7.5/10.0	7.8/10.3	16
	480V 3 ~	60	7.5/10.0	7.8/10.3	16
Steam or Non heated	220-480V 1 ~	50/60	-	0.8	10



Front



Side view



Rear

Water and steam connection			W5105N
Water valves	DN		20
Water pressure	kPa		200-600
Capacity at 300 kPa	l/min		20
Drain valve	ø mm		75
Draining capacity	l/min		170
Steam valve	DN		15
Steam pressure	kPa		300-600
Liquid detergent supplies			5
Floor requirements			
Frequency of the dynamic force	Hz		9.1
Floor load at max extraction	kN		1.9 ± 2.5
Sound levels			
Sound power level (IEC 60704-2-4)			
wash	dB(A)		64
extraction	dB(A)		70
Heat emission			
% of installed power, max			5
Shipping data			
Weight	net, kg		152
Shipping volume	m <sup>3</sup>		0.88
Accessories			
Steel base			x
Hose kits for water or steam			x
Fluff collector			x
Dimensions in mm			
A Width			720
B Depth			697
C Height			1217
D			424
E			1187
F			920
G			80
H			1119
I			217
J			124
K			1099
L			999
M			278
N			105
O			212
1 Operating panel	7 Drain		
2 Door opening ø 365 mm	8 Liquid detergent supply		
3 Detergent box	9 Electrical connection		
4 Cold water	10 Steam connection		
5 Hot water			
6 Re-used water			

Front and side panels in light grey and blue (RAL 260 70 05, 250 60 30)

Other voltages available, see installation manual

Average data. Crated weight/shipping volume depends on configuration.

Please contact logistics for exact measures.

Art. No. 438919510EN/2015.07.08

We reserve the right to alter specifications without notice.



**Electrolux**  
**Authorized**  
**Partner**



Unit 3 / 41 Biscayne Way, Jandakot, WA 6164  
Ph : (08) 9414 9474 Fax : (08) 6210 5961  
Service : 0411 883 346 / 0400 246 352  
Sales : 0406 659 429/ [sales@comls.com.au](mailto:sales@comls.com.au)  
Web site : [www.comls.com.au](http://www.comls.com.au)