



Tumble dryer T5300S

Features and benefits

- High productivity – 2 full loads per hour per pocket
- Low energy consumption for optimal efficiency and economy
- Selection of temperature and time for easy operation
- Customized user panels for specific user needs – available for Coin and OPL (On Premises Laundry)
- Large door opening for easy loading and unloading
- Easy access to vital parts from front and rear for simple servicing
- With Compass Pro program control
 - Large and clear display for easy program selection
 - Easy access with user-friendly interface
 - Language selection
 - Service program for adjustment of parameters
 - USB connection
- Serviceprogram for adjustment of parameters eg. temperature and cool-down time
- The coin version with Ecopower to avoid over drying of the garments and get a lower energy consumption

Main options

- Stainless steel front
- Stainless steel drum
- Residual Moisture Control – RMC
- Reversing drum
- Payment: coinmeter with Ecopower, chipcard reader, central payment connection



Images shown are a representation of the product only and variations may occur.

Main specifications			T5300S			
Rated capacity, filling factor 1:18	kg/lb		16.7/37			
	kg/lb		12/26			
Drum volume	litre		300			
Drum diameter	mm		760			
Heating	gas	BTU/h (kW)	71 700 (21)			
	el	kW	9 / 13.5 / 18			
Consumption data			Gas	EI 9 kW	EI 13.5 kW	EI 18 kW
Total time at 13.6 kg	min		21	43	29	24
Energy consumption at 13.6 kg	kWh		7.11	6.65	6.51	6.51
Evaporation	g/min		329	160	231	279
Energy kWh/litre water evaporated	kWh/l		1.03	0.96	0.97	0.97
At rated capacity 100% cotton load at 50% initial moisture dried to 0%. Value per pocket						

Electrical connections

Heating alternative	Main voltage	Hz	Heating power kW	Total power kW	Recommended fuse A
Electric heated	220-240V 3 ~	50/60	9.0	10.0	35
	380-415V 3 ~	50	9.0/13.5/18.0	10.0/14.5/19.0	16/25/35
	440-480V 3 ~	60	9.0/13.5/18.0	10.0/14.5/19.0	16/20/35
Gas heated	120V 1 ~	60	-	1.0	15
	208-240V 1 ~	60	-	1.0	15
	200V 3 ~	50/60	-	1.0	10
	220-240V 1 ~	50/60	-	1.0	10
	380-480V 3 ~	50/60	-	1.0	10

Gas and air connections

T5300S		
Gas	ISO 7/1-R	1/2"
Gas pressure	Natural gas	Pa mbar
	Propane	Pa mbar
Air outlet		Ø mm
Evacuated air,	gas/el	m³/h
Pressure drop	gas/el	Max. Pa

Sound levels

Airborne sound level	dB(A)	<70
----------------------	-------	-----

Heat emission

% of installed power, max	15
---------------------------	----

Shipping data

	net, kg	289
	crated, m³	2.03

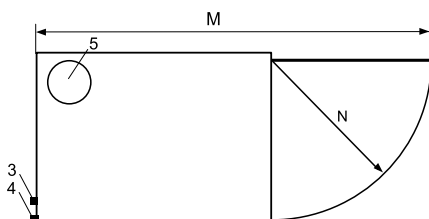
Dimensions in mm

A	Width	790
B	Depth	1115
C	Height	1940
D		1270
E		1210
F		320
G		260
H		905
I		140
J		1930
K		30
L		105
M		1840
N		740
O		210

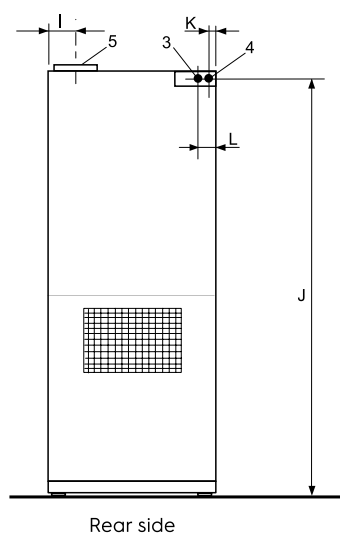
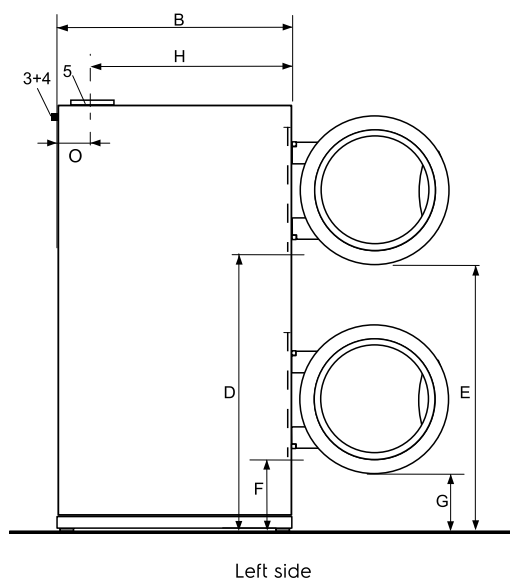
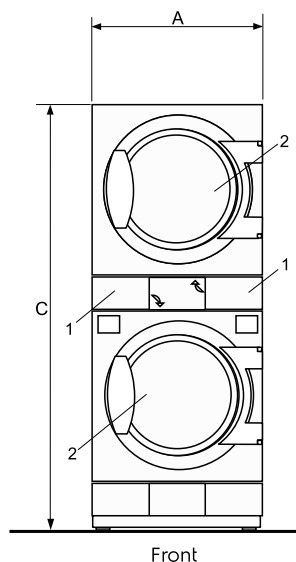
- 1 Operating panel
- 2 Door opening Ø 580 mm
- 3 Electric connection
- 4 Gas connection
- 5 Exhaust connection

Other voltages available, see installation manual.
Value per pocket.

Average data. Crated weight/shipping volume depends on configuration.
Please contact logistics for exact measures.



Electrolux



Art. No. 438919518EN/2015.01.14
We reserve the right to alter specifications without notice.



Electrolux
Authorized
Partner



Unit 3 / 41 Biscayne Way, Jandakot, WA 6164
Ph : (08) 9414 9474 Fax : (08) 6210 5961
Service : 0411 883 346 / 0400 246 352
Sales : 0406 659 429/ sales@comls.com.au
Web site : www.comls.com.au