



Washer extractor

QuickWash QWC

Features and benefits

- Control knob for simple program selection and start
- Large, clear display
- **AS – Automatic Savings:**
 - The machine weighs the linen and adjusts the amount of water and energy according to the load. This leads to considerable savings in case the machine is not fully loaded
- Four compartment detergent box for manual dosing of powder or liquid detergent
- High extraction force for efficient dewatering
- Panels and frame made from galvanized steel
- Inner and outer drums made from stainless steel
- Powder coated black front panel, side panels and top cover
- Strong door and hinges. Easy-grip, ergonomic door handle which makes the door easy to open and close
- Drain pump
- Frequency-controlled motor with no carbon or brushes
- Door seal in the door, does not wear when the machine is loaded and unloaded



Images shown are a representation of the product only and variations may occur.

Main options

- Stacking kit to install tumble dryer QuickDry QDC on top to save space
- Plinths for raising the machine to a comfortable height (height 100 mm when installed with a tumble dryer, or 290 mm)
- Connecting hoses

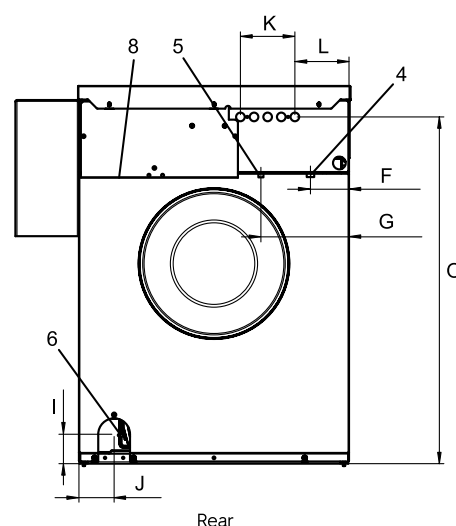
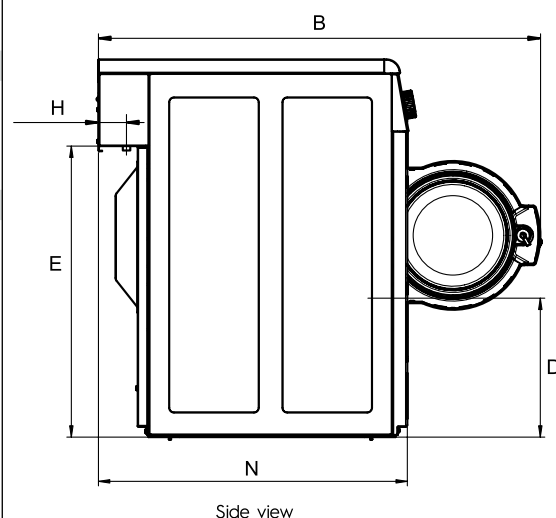
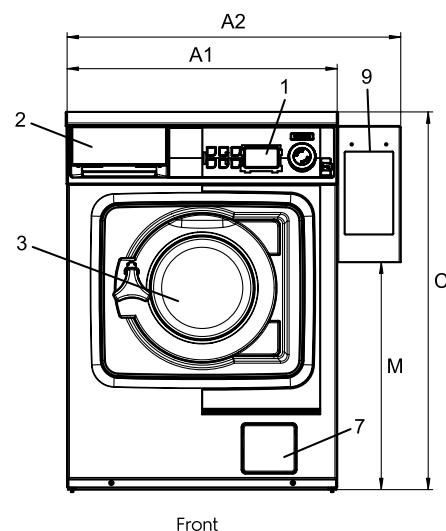
Main specifications			QuickWash QWC	
Max. capacity		kg	5.5	
Drum,	volume	litre	53	
	diameter	Ø mm	452	
Extraction		rpm	1300	
G-factor			425	
Heating alternatives, electricity		kW	2.2 / 2.8 / 4.4	
Consumption data "Normal 60°C"				
Total time		min	38 / 49 / 44	
Water consumption		litre	56	
Energy consumption (motor/heating)		kWh	0.15/0.80	
Water temperature 15°C cold water.				

Electrical connections					
Heating alternative	Main voltage		Heating power kW	Total power kW	Recommended fuse A
		Hz			
Electric heated	220–240V 1~	50/60	2.2	2.6	16
	220–240V 1~	50/60	2.8	3.1	13
	380–415V 3~	50/60	4.4	4.8	10

Water connections		QuickWash QWC	
Water valves	DN	20	
Water pressure	kPa	200-500	
Capacity at 300 kPa	l/min	17	
Draining capacity	l/min	25	
Max. draining	l	20	
Floor requirements			
Frequency of the dynamic force	Hz	20	
Floor load at max extraction	kN	1.02 ± 0.3	
Sound levels			
Sound power level (IEC 60704-2-4)			
wash	dB(A)	59	
extraction	dB(A)	72	
Heat emission			
% of installed power, max		5	
Shipping data			
	net, kg	100	
Shipping volume	m³	0.46	
Accessories			
Stacking kit with QuickDry QDC		x	
Stainless base, 290 mm, and galvanised base for stacking installation, 100 mm		x	
Dimensions in mm			
A1 Width		595	
A2 Width		735	
B Depth		974	
C Height		832	
D		306	
E		641	
F		84	
G		194	
H		48	
I		65	
J		78	
K		120	
L		119	
M		501	
N		681	
O		764	
1 Control panel	5 Hot water		
2 Door opening ø 255 mm	6 Drain valve		
3 Detergent box	7 Drain pump		
4 Cold water	8 Electrical connection		
	9 Payment system		

Other voltages available, see installation manual.

Average data. Crated weight/shipping volume depends on configuration.
Please contact logistics for exact measures.



Electrolux
Authorized
Partner



Unit 3 / 41 Biscayne Way, Jandakot, WA 6164
Ph : (08) 9414 9474 Fax : (08) 6210 5961
Service : 0411 883 346 / 0400 246 352
Sales : 0406 659 429/ sales@comls.com.au
Web site : www.comls.com.au