

Reference washer extractor

Wascator FOM71 CLS

Features and benefits

- Meets IEC and ISO international standards
- Suitable for testing washing effects of detergents and chemicals and for textile quality control
- Suspended drum construction allows a high extraction force.
No foundation required
- Small space between outer/inner drum for efficient use of water and detergent
- Dual water control of volume (weight) and level
- Built in scale for precise volume control, accuracy:
 - volume control +/- 0.2 litre/bath
 - level control +/- 0.8 litre/bath
- Equipped with Clarus Control® - a fully programmable electronic timer
- Frequency controlled motor system for flexibility in programming and precise speed
- Test tap for water samples
- Stainless steel drum assembly, front, side and top panel



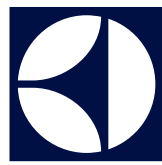
Images shown are a representation of the product only and variations may occur.

Main options

- WPM (Wash Program Manager) PC programming kit in Windows
- Extra program memory cards

Main specifications			Wascator FOM71 CLS
Drum,	volume	litre	61
	diameter	Ø mm	520
Extraction, max		rpm	1100
G-factor, max			350
Heating	electricity	kW	5.4

Certified in accordance with ISO 9001 and ISO 14001 and approved IP 24D.



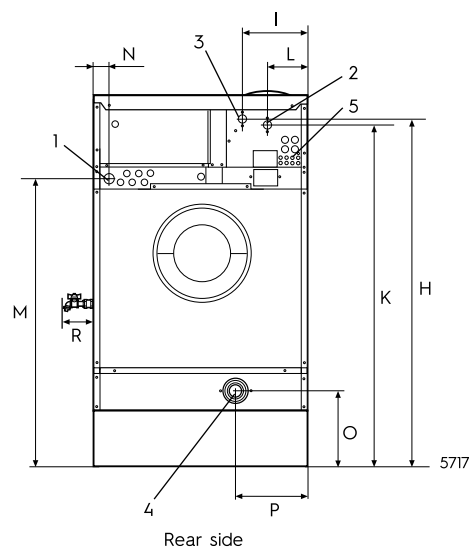
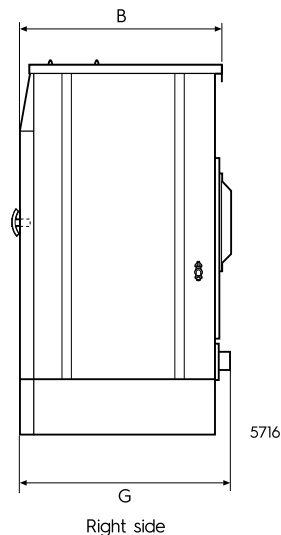
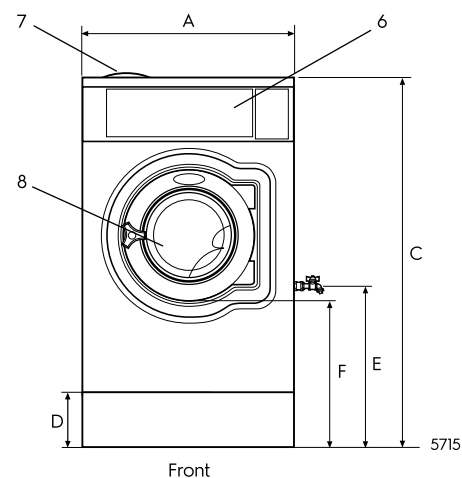
Electrolux

Function/subsystem

Ambient conditions	
<p>The machine shall be able to function during the same ambient conditions as normal washing machines. The functional values with tolerances will be valid if following ambient conditions are kept</p> <p>Voltage Frequency Inlet water Cold Hot Water pressure Ambient temperature</p>	
<p>Nominal $\pm 2\%$ Nominal $\pm 2\%$ (15± 2) °C Max (60± 2) °C (240± 50) kPa (20± 5) °C</p>	
Inner drum	
<p>Diameter Depth Volume Lifting vanes: Number Height Radius Base width</p> <p>Perforation: Diameter Depth of countersink Total hole area Material: Stainless steel</p>	
<p>(520± 1) mm (315± 1) mm 61 l 3 53 mm 17 mm 65 mm 5 mm 2.5 mm 600 cm² 2333 (SS 18/8)</p>	
Outer drum	
<p>Diameter Sump Material: Stainless steel</p>	
<p>554 mm ~ (1300± 25) ml 2333 (SS 18/8)</p>	
Door opening	
<p>Opening diameter</p>	
<p>310 mm</p>	
Cabinet	
<p>Stainless steel</p>	
<p>2333 (SS 18/8)</p>	
Drum speed	
<p>Washing speed: Programmable Extraction: Programmable</p>	
<p>(20 – 59± 1) RPM (200 – 1100± 20) RPM</p>	
Reversing rythm	
<p>Programmable</p>	
<p>(0 – 250± 0.1) = sec. (Tolerance area refers to timer intervals)</p>	
Water level	
<p>Weight sensing Repeatability Stepsize Dosing accuracy weight control Level sensing: Repeatability Stepsize Dosing accuracy level control</p>	
<p>± 0.1kg/bath 0.05kg ± 0.2kg/bath ± 5 mm 3 mm ± 0.8litre/bath</p>	
Thermostat	
<p>Continuos variable in each wash sequence Selectable interval Programming steps Switch off temperature accuracy in Interval 30-97 °C Interval switch off temperature – switch on temperature</p>	
<p>Yes (4-97) °C 1 °C ± 1 °C 4 °C</p>	

Electrical connections		Wascator FOM71 CLS	
Heating	Voltage		
EL.	230V 3AC 50 Hz	kW(A)	5.7(16)
	400-415V 3N AC 50 Hz	kW(A)	5.7(10)
	415V 3N AC 50 Hz	kW(A)	5.7(10)
Water and steam connection			
Water valves	DN		20
Water pressure	kPa		150-400
Capacity at 300 kPa	l/min		20
Drain valve	ø mm		50/75
Draining capacity	l/min		150
Liquid detergent supplies			4
Floor requirements			
Frequency of the dynamic force	Hz		18.3
Floor load at max extraction	kN		1.6 ± 0.5
Sound levels			
Airborne sound level	dB(A)		71
Shipping data			
Weight	net, kg		195
	crated, kg		260
Shipping volume	m ³		0.89
Accessories			
Hose connection kit for water			x
Dimensions in mm			
A Width			720
B Depth			690
C Height			1315
D			200
E			750
F			555
G			720
H			1230
I			220
K			1010
L			135
M			825
N			45
O			300
P			240
R			135
1	Electrical connection	6	Control panel
2	Cold water	7	Detergent compartment
3	Hot water	8	Door opening ø 310 mm
4	Drain		
5	Liquid supply connections		

Other voltages available, see installation manual.



Electrolux
Authorized
Partner

Detergent compartment	
Number of compartments	4
Number of programmable liquid detergents	4
Wash programs	
Fully programmable wash programs	Clarus
Memory cards for IEC 60456, ISO 6330, M&S and other can be ordered separately	IEC 60456
Memory cards	Product number/Part number
Kit consisting of 5 empty memory cards:	988 8022-40
ISO6330/1984 (locked card)	988 9162-20
ISO6330/1984 (open card)	988 9162-21
ISO6330/2000 (locked card)	988 9162-22
ISO6330/2000 (open card)	988 9162-23
ISO6330/2012 (locked card)	988 9162-55
ISO6330/2012 (open card)	988 9162-56
IEC 60456 Ed 4 (locked card)	988 9162-25
IEC 60456 Ed 4 (open card)	988 9162-26
IEC 60456 Ed 5 (locked card)	988 9162-28
IEC 60456 Ed 5 (open card)	988 9162-29
EN60456 2005 (locked card)	988 9162-45
EN60456 2005 (open card)	988 9162-46
Marks & Spencer (locked card)	988 9162-27
H&M (locked card)	988 9162-47
Woolmark washprograms (locked card)	988 9162-48
	438 9547-08
ISO3175-4:2003 (locked card)	988 9162-59
ISO 12138:1996 (locked card)	438 9537-69
ISO 10528: 1995 (locked card)	438 9537-70
BS5651: 1989 (locked card)	438 9537-84
HLCC (locked card)	438 9537-73
AS/NZS 2040.1 (locked card)	438 9547-06
ISO 3175-4:2003	988 9162-59
Approvals	
The machine shall have same approvals as normal washing machines	CE, cETLus
Special equipment	
Manual tap for sampling of bath water on right side:	Yes
Connection for temperature recording sensor in rear gable:	Yes
Possibility to connect lint trap:	Yes
Memory card with copy safe programs for M&S and (IEC; ISO):	Yes
Procedure for calibration of the machine according to ISO 9000 rules:	Yes
Possibility to take out test pieces from wash bath during the wash:	Yes
Analog output from load cells to data acquisition systems:	Yes

Approval from Marks & Spencer required.

Pre- programmed wash programs

The Clarus Control in the Wascator FOM71 CLS contains 9 pre- programmed "wash programs". They are not real wash programs but are mainly designated for checking purposes. The stored programs are:

Place	Name	Content
991	Start-up Programme	Flushes the machine with water. Shall be used if the machine has been idle for more than 2 hours.
992	Level check	Checking of the level. With ruler inside the machine fills to 100 mm, 130 mm, 160 mm, and 200 mm.
993	Weight check	Machine fills water to 18kg and to 26kg.
994	Temperature check	Check of the temperatures at 25°C, 40°C, 60°C and 90°C 2 minutes at each temperature.
995	Extraction	500 RPM 1 min.
996	Extraction	500 RPM 5 min.
997	Extraction	775 RPM 2 min.
998	Extraction	950 RPM 4 min.
999	Extraction	1100 RPM 5 min.



Electrolux
Authorized
Partner



Unit 3 / 41 Biscayne Way, Jandakot, WA 6164
Ph : (08) 9414 9474 Fax : (08) 6210 5961
Service : 0411 883 346 / 0400 246 352
Sales : 0406 659 429/ sales@comls.com.au
Web site : www.comls.com.au