



Washer extractor

W4300H

Features and benefits

- **Clarus Control®** with:
 - Fully programmable microprocessor
 - All relevant wash parameters can be programmed
 - Programming from key pad or downloading via memory card
- High extraction force for efficient dewatering
- Extremely low water and energy consumption - see table below
- Four compartment soap box for manual dosing of powder or liquid detergent
- Stainless steel front panel and grey side panels
- Large door opening for easy loading/unloading
- Low noise level, for pleasant working environment
- SuperBalance™ guarantees the correct extraction force



Images shown are a representation of the product only and variations may occur.

Main options

- IS - Integrated Saving
- Stainless steel side panel
- Dual drain valves for water re-use

Main specifications				W4300H	
Max. capacity		kg/lb		33/75	
Drum, volume		litre		300	
	diameter	ø mm		795	
Extraction		rpm		820	
G-factor				300	
Heating alternatives, 230/400V	electricity	kW		19.4	
	steam			x	
	non-heated			x	
Consumption data "Normal 60°C" (3G01)				El	Steam
Total time		min		47	
Water consumption (cold/hot)		litre		219/51	202/52
Energy consumption (motor/heating)		kWh		0.55/1.25	0.55
Steam consumption		kg		-	2
Water temperature 15°C cold water and 65°C hot water. Depending on steam pressure.					

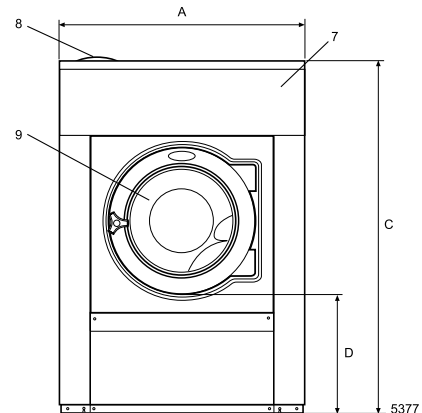
Electrical connections			W4300H
Heating	Voltage		
El.	230V 3 AC 50 Hz	kW(A)	19.4(63)
	208-240V 3AC 60 Hz	kW(A)	19.4(63)
	400-415V 3N AC 50 Hz	kW(A)	19.4(35)
Steam	230V 1AC 60 Hz	kW(A)	2.1(10)
or	208-240V 1AC 60 Hz	kW(A)	2.1(10)
non-heated	230V 1AC 50 Hz	kW(A)	2.1(10)
Water and steam connection			
Water valves	DN		20
Water pressure	kPa		150-400
Capacity at 300 kPa	l/min		60
Drain valve	ø mm		75
Draining capacity	l/min		170
Steam valve	DN		15
Steam pressure	kPa		300-600
Liquid detergent supplies			5
Floor requirements			
Frequency of the dynamic force	Hz		13.7
Floor load at max extraction	kN		6.2 ± 1.3
Sound levels			
Sound pressure level	dB(A)		76
Sound power level (IEC 60704-2-4)			
wash	dB(A)		69
extraction	dB(A)		83
Heat emission			
% of installed power, max			5
Shipping data			
Weight	net, kg		556
	crated, kg		575
Shipping volume	m ³		2.1
Accessories			
Steel base frame			x
Water re-use tank (Clarus Control)			x
Hose kits for water or steam			x
Dimensions in mm			
A Width			1020
B Depth			1060
C Height			1445
D			500
E			1135
F			1155
G			100
H			1360
I			215
K			1320
L			300
M			380
N			100
O			360
P			330
1 Electrical connections	6 Liquid supply connections		
2 Cold water	7 Control panel		
3 Hot water	8 Soap box		
4 Steam connection	9 Door opening ø435		
5 Drain			

Other voltages available, see installation manual.

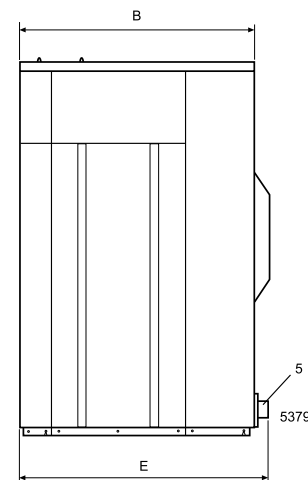
Approx. value at operators position in a mid-size laundry room.

Art No. 438919522EN/2015.01.14

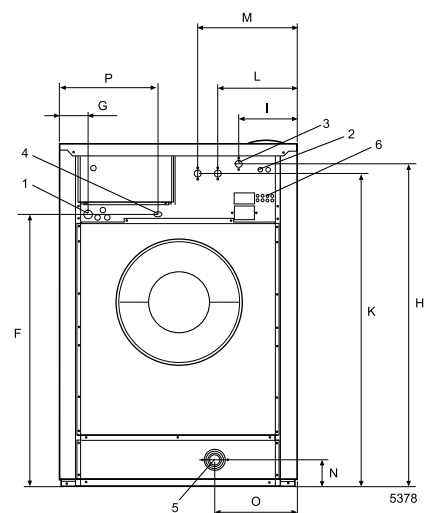
We reserve the right to alter specifications without notice.



Front



Right side



Rear side



Electrolux
Authorized
Partner



Unit 3 / 41 Biscayne Way, Jandakot, WA 6164
Ph : (08) 9414 9474 Fax : (08) 6210 5961
Service : 0411 883 346 / 0400 246 352
Sales : 0406 659 429/ sales@comls.com.au
Web site : www.comls.com.au