



# Washer extractor

## W5180N

### Features and benefits

- **Compass Pro<sup>®</sup> microprocessor offers:**
  - Large display and one control knob for easy program selection
  - Language selection
  - Quick selection and option buttons for the most frequently used wash programs and options
  - Wash program packages optimized on Economy, Performance and Time. (Available on general programs)
- Extremely low water and energy consumption – see table below
- Four compartment detergent box for manual dosing of powder or liquid detergent
- High extraction force for efficient dewatering
- Door with gasket and strong hinges built for heavy duty operation
- Stainless and galvanized steel in all vital parts for high degree of rust protection
- SuperBalance guarantees the correct extraction force

### Main options

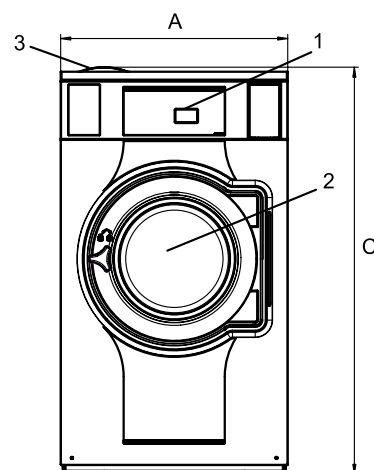
- Automatic liquid detergent supply (optional I/O board)
- Connection to booking- /payment- system or coin meter



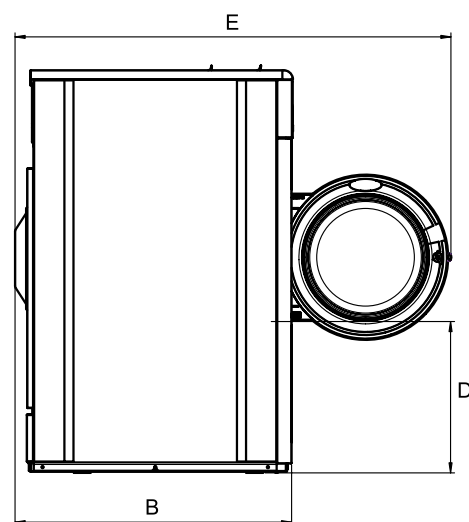
Images shown are a representation of the product only and variations may occur.

Main specifications				W5180N			
Max. capacity	filling factor 1:9	kg/lb		20/45			
Drum,	volume	litre		180			
	diameter	ø mm		650			
Extraction		rpm		525			
G-factor				100			
Standard heating alternatives	electricity	kW		13.0			
	steam			x			
	non-heated			x			
<b>Consumption data "Normal 60°C"</b>							
<b>Economy</b>				EI		Steam	
Total time	min			Full load, 20 kg	Half load, 10 kg	Full load, 20 kg	Half load, 10 kg
Water consumption (cold+hot)	litre			50	47	50	47
Energy consumption (motor/heating/hot water)	kWh			124+31	101+21	155+0	122+0
Steam consumption	kg			0.25/0.9/2.0	0.25/0.6/1.35	0.25/-	0.25/-
Residual moisture	%			-	-	4.35	2.9
				69	78	69	78
Water temperature 15°C cold water and 65°C hot water. Depending on steam pressure.							

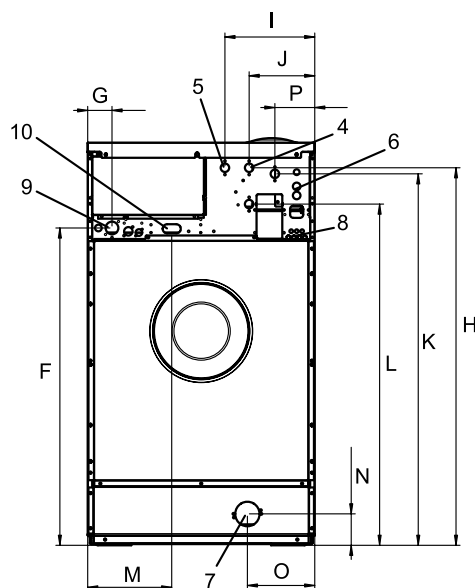
Electrical connections					
Heating alternative	Main voltage		Heating power kW	Total power kW	Recommended fuse A
Electric heated	220-240V 1 ~	50/60	13.0	13.5	63
	220-240V 3 ~	50/60	13.0	13.5	35
	380-415V 3N ~	50/60	13.0	13.5	25
	440V 3 ~	60	13.0	13.5	20
	480V 3 ~	60	13.0	13.5	20
Steam or Non heated	220-480V 1 ~	50/60	-	1.0	10



Front



Side view



Rear

Water and steam connection			W5180N
Water valves	DN		20
Water pressure	kPa		200-600
Capacity at 300 kPa	l/min		30
Drain valve	Ø mm		75
Draining capacity	l/min		170
Steam valve	DN		15
Steam pressure	kPa		300-600
Liquid detergent supplies			5
Floor requirements			
Frequency of the dynamic force	Hz		8.8
Floor load at max extraction	kN		2.9 ± 3.9
Sound levels			
Sound power level (IEC 60704-2-4)			
wash	dB(A)		69
extraction	dB(A)		72
Heat emission			
% of installed power, max			5
Shipping data			
Weight	net, kg		207
Shipping volume	m <sup>3</sup>		1.26
Accessories			
Steel base			x
Hose kits for water or steam			x
Fluff collector			x
Dimensions in mm			
A Width			750
B Depth			914
C Height			1345
D			500
E			1440
F			1048
G			80
H			1247
I			297
J			217
K			1227
L			1127
M			278
N			104
O			223
P			132
1 Operating panel	7 Drain		
2 Door opening Ø 395 mm	8 Liquid detergent supply		
3 Detergent box	9 Electrical connection		
4 Cold water	10 Steam connection		
5 Hot water			
6 Re-used water			

Front and side panels in light grey and blue. (RAL 260 70 05, 250 60 30)  
 Other voltages available, see installation manual  
 Average data. Crated weight/shipping volume depends on configuration.  
 Please contact logistics for exact measures.  
 Art. No. 438919512EN/2015.07.08

We reserve the right to alter specifications without notice.



**Electrolux**  
**Authorized**  
**Partner**



Unit 3 / 41 Biscayne Way, Jandakot, WA 6164  
 Ph : (08) 9414 9474 Fax : (08) 6210 5961  
 Service : 0411 883 346 / 0400 246 352  
 Sales : 0406 659 429/ [sales@comls.com.au](mailto:sales@comls.com.au)  
 Web site : [www.comls.com.au](http://www.comls.com.au)