

Bases for washer extractors and tumble dryers



W565H
Base with closed front and sides

Features and benefits

- A base brings the machine to a convenient working height – for improved ergonomics in your laundry
- Front and side panels of the machine are better protected from wear and tear when mounted on a base
- Base IWS™ (Integrated Weighing System) for machines with Clarus Control. Load cells located in the feet weigh the contents of the drum as it being loaded. The current weight is displayed on the Clarus Control panel

BASE; open front & sides
1


Suitable for models: W555H, T5130
Material: Stainless steel.

2

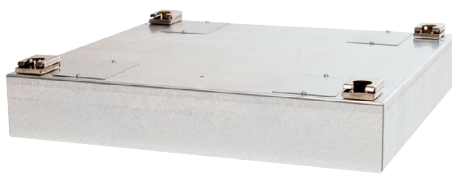

Suitable for models: W465H, W565H, W475H, W575H, T5190
Material: Stainless steel.

3


Suitable for models: W465H, W565H, W475H, W575H,
W4105H, W5105H
IS:
Material: W4130H, W4180H, W4240H, W4300H
Stainless steel.



W4130H

BASE; closed front & sides
4


Suitable for models: Base frame for stacked installation
W555H, T5130.
Material: Galvanised steel.

5


Suitable for models: W555H, T5130
Material: Galvanised, grey painted steel with
stainless steel front panel (9889182-43).
Special version "floating foundation"
concrete filled (9889182-45).

6


Suitable for models: W465H, W565H, W475H, W575H,
W4105H, W5105H, W4130H, W5130H,
W4180H, W5180H, W4240H, W5240H,
W4300H, W5300H, T5190,
WD5130, WD5240
Material: Galvanised, grey painted steel
with stainless steel front panel.

7


Suitable for models: W575N*, W585N*, W5105N*, W5130N,
W5180N, W5250N
W475S*, W575S*, W485S*, W585S*,
W4105S*, W5105S*, W4130S, W5130S
W4180S, W5180S, W4250S, W5250S
Material: Galvanised steel / *Galvanised, grey painted steel
with stainless steel front panel.

BASE; mobile
8


Suitable for models: W465H, W565H, W475H, W575H, W4105H, W5105H, T5190
 Material: Galvanised, grey painted steel with stainless steel front panel.
 Feature: The base frame has four wheels. Makes the maintenance work easier in narrow areas.

BASE; "floating foundation"
9


Suitable for models: W465H, W565H, W475H, W575H, W4105H, W5105H, W4130H, W5130H, W4180H, W5180H, W4240H, W5240H
 Material: Galvanised, grey painted steel with stainless steel front panel.
 Feature: A "floating foundation" filled with concrete eliminates noise to other parts of the building.

10


Suitable for models: W465H, W565H, W475H, W575H
 Material: Stainless steel.
 Feature: Lintbox integrated. Easy to clean under the base.

STACKING KIT
11


Suitable for models: W555H and T5130

| Pos. | Dimensions in mm | | | High spin washer extractors* | | | | | | | |
|--|------------------|----------------------------|----------------------------|------------------------------|-------------------------------|----------------------------------|----------------------------------|----------------------------------|----------------------------------|------------------|-----------------|
| | Height | Width | Depth | W555H | W465H/W475H W565H/W575H | W4105H W5105H | W4130H W5130H | W4180H W5180H | W4240H W5240H | W4300H W5300H | |
| 1 | 200 | Width, same as the machine | Depth, same as the machine | 9889186-10 | | | | | | | |
| 1 | 290 | | | 9889186-11 | | | | | | | |
| 1 | 555 | | | 9889186-12 | | | | | | | |
| 2 | 240 | | | | | 9889185-05 | | | | | |
| 3 | 485 | | | | | | | 9889187-06 | | | |
| 3 | 460 | | | | | | | | 9889188-06 | | |
| 3 | 430 | | | | | | | | | 9889189-06 | 9889190-06 |
| 3 | 490 | | | | | 9889185-06 | | 9889187-09 (IS) | | | |
| 3 | 490 | | | | | | 9889186-06 | | | | |
| 3 | 460 | | | | | | | | 9889188-09 (IS) | | |
| 3 | 430 | | | | | | | | | 9889189-09 (IS) | 9889190-09 (IS) |
| 4 | 100 | | | | | 9889182-26 | | | | | |
| 5 | 290 | | | | | 9889182-43 | | | | | |
| 6 | 190 | | | | | | 9889185-11 | 9889186-21 | | | |
| 6 | 210 | | | | | | | | 9889187-11 | | |
| 6 | 230 | | | | | | | | | 9889188-11 | 9889189-51 |
| 8 | 190 | | | | | | 9889185-13 | 9889186-23 | | | 9889190-11 |
| 9 | 190 | | | | | | 9889185-12 | 9889186-22 | | | |
| 9 | 210 | | | | | | | | 9889187-12 | | |
| 9 | 230 | | | | | | | | | 9889188-12 | 9889189-52 |
| 5 | 290 | | | | | 9889182-45 | | | | | |
| 10 | 350 | | | | | | 9889185-15 | | | | |
| Normal and Super spin washer extractors | | | | | | | | | | | |
| | | | | W575N | W585N W485S, W585S | W5105N W4105S, W5105S | W5130N W4130S, W5130S | W5180N W4180S, W5180S | W5250N W4250S, W5250S | | |
| 7 | 190 | | | 9889179-40 | 9889179-41 | | | | | | |
| 7 | 210 | | | | | 9889179-42 | | | | | |
| 7 | 210 | | | | | | 9889179-23 | | | | |
| 7 | 230 | | | | | | | 9889179-24 | 9889179-25 | | |
| Tumble dryers | | | | | | | | | | | |
| | | | | T5130 | T5190 | | | | | | |
| 5 | 290 | | | 9889182-44 | | | | | | | |
| 2 | 240 | | | | 9889185-05 | | | | | | |
| 6 | 190 | | | | 9889185-61 | | | | | | |
| 8 | 190 | | | | 9889185-63 | | | | | | |
| 1 | 200 | | | 9889186-10 | | | | | | | |
| 1 | 290 | | | 9889186-11 | 9889185-06 | | | | | | |
| 1 | 555 | | | 9889186-12 | | | | | | | |
| 3 | 485 | | | | 9889185-06 | | | | | | |
| Washer & Dryer | | | | | | | | | | | |
| | | | | WD5130 | WD5240 | | | | | | |
| 6 | 290 | | | 9889191-01 | | | | | | | |
| 6 | 300 | | | | 9889192-01 | | | | | | |
| Stacking kit | | | | | | | | | | | |
| | | | | W555H & T5130 | | | | | | | |
| 11 | | | | 9888020-31 | | | | | | | |

* Note that base with IS is only available on W4130H, W4180H, W4240H and W4300H.